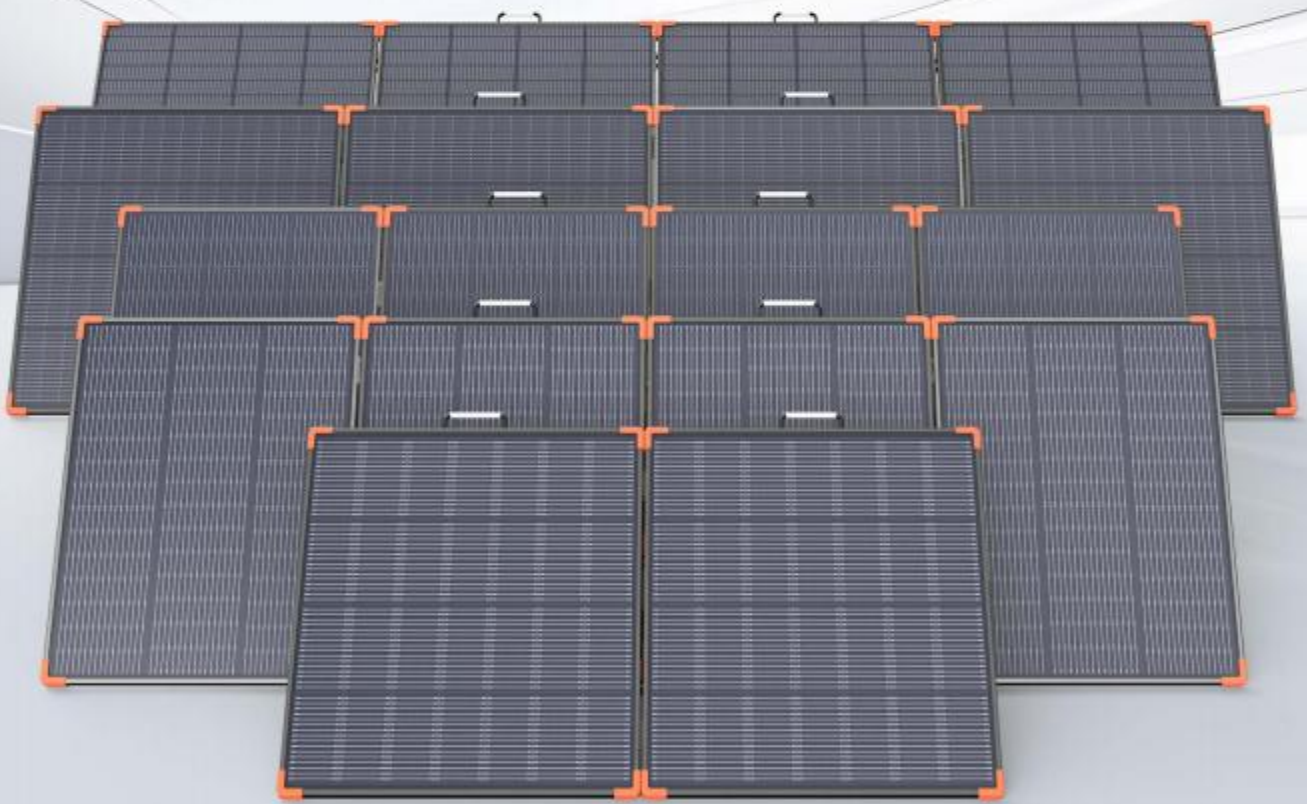


Foldable Solar Panel Series



180W~450W

Ohblue Foldable Solar Panel Series Covering a power range of 180W–450W, this series is lightweight, durable, and highly compatible with a wide variety of devices. With comprehensive safety protection and a foldable, portable design, it is ideal for RVs, camping, and off-grid emergency backup, delivering efficient and reliable power for energy storage systems and outdoor use.



/// Features

- ♦ N-Type cells with 25% efficiency.
- ♦ 16BB design for superior low-light performance and long lifespan.
- ♦ Durable ETFE layer for waterproof, dustproof, and high-temperature resistance.
- ♦ Designed with aluminum frame and IP68 waterproof rating—endure tough outdoor conditions.
- ♦ Wide compatibility with power stations.
- ♦ Foldable designed with reinforced kickstands is easy to set up for outdoor adventures.



Electrical Specifications

Model	OB-EZ180W	OB-EZ300W	OB-EZ350W	OB-EZ400W	OB-EZ450W
Maximum Power at STC (Pmax)	180W	300W	350W	400W	450W
Maximum Power Voltage (Vmp)	17.3V	27.9V	43.2V	37.2V	38.3V
Maximum Power Current (Imp)	10.40A	10.75A	8.10A	10.75A	11.70A
Open-circuit Voltage (Voc)	20.1V	32.3V	50.2V	43.1V	45.9V
Short-circuit Current (Isc)	10.91A	11.31A	8.58A	11.32A	12.40A
Operating Temperature Range	-4°F ~ 140°F / -20°C ~ 60°C				

*STC(Standard Test Condition): Irradiance 1000W/m², Cell Temperature 25°C, Air Mass 1.5.

Mechanical Parameters

Model	OB-EZ180W	OB-EZ300W	OB-EZ350W	OB-EZ400W	OB-EZ450W
Cell Type	Monocrystalline Silicon, N-Type 182 16BB				
Cell Efficiency	25%				
Surface Material	ETFE				
Frame	Anodized Aluminium Alloy				
IP Rating	IP68				
Connector	Solar Connector				
Included Components	portable solar charger, 10ft solar extension cable (solar to ANDERSON/XT60/DC7909/DC5521), DC5521 (Female) to DC6544/6330/5525/5521/5517/4817/4017/35135/7450/7955 (Male) adapters				
Unfolded Dimensions (mm)	1402 × 815 × 22	2360 × 800 × 21.5	2391 × 842 × 21.5	3048 × 817 × 21.5	3095 × 878 × 20
Folded Dimensions (mm)	700 × 815 × 44	590 × 800 × 87.5	605 × 842 × 87.5	762 × 817 × 87.5	773 × 878 × 90
Weight(kg)	5.6	9.71	9.35	11.82	13.37